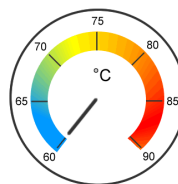


# MOLYDUVAL Bentogen 2 X



## High Temperature Grease

A lubricating grease for bearings in machines working under high working temperatures. Contains inorganic non dropping thickener, is relative insensitive to wet working conditions, hot and cold water, steam, aggressive fluids, acids.

When used at temperatures exceeding 150°C lubricating intervals should be shortened for reducing the risk of grease hardening in the bearing.

### Properties

- \* high temperature resistance
- \* soft and smooth
- \* good water resistance
- \* non dropping, melting at high temperatures (no dropping point)
- \* protects from wear
- \* good tackiness
- \* withstands weak acids and alkaline solutions
- \* relative good compatible with hot glues
- \* contains high pressure and anti wear additive (EP- and AW-additives)

### Applications

- \* for spindles
- \* for bearings in high temperature sectors, ventilators, ovens, motors
- \* for lubrication of pin ejectors of plastic injection machines
- \* for heavy duty sleeve - and anti-friction bearings staying in contact with solvents, gaz, petrol or their vapors
- \* for bearings at hot glue application machines
- \* for steam faucets
- \* for labyrinth seals

### Technical Datas

Color		brown
Consistency Class NLGI	0,1 mm	2
Name		KP2N-20
Base Fluid		Min
Thickener		inorganic
Name		ISO-L-XBDEB2
Density 15°C	kg/m <sup>3</sup>	910
Water Resistance static	Grade	1-90
Temperature Range	°C	-20 -> +150
Corrosion Protection copper	Grade	1
Dropping Point	°C	no
Corrosion Protection Emcor, WWO, distilled water	Grade	0/0

*The indicated service temperatures are guide values depending on the lubricants composition and on the application. They may vary in case of special influences or ongoing use.*

For further information, please see our website [www.molyduval.com](http://www.molyduval.com) or consult your local representative.

The content of this manual is based on our current knowledge and experience in the development and manufacture of lubricants. Because of the complexity of tribological systems, the effect of our products depends on many parameters, which we cannot assess and which influence we cannot evaluate. For this reason general statements about the function of our products are not possible. The information in this manual, therefore, contains non-binding guidelines, which should give the technical trained reader information on possible applications. The information in this manual does not include property assurances or warranties or guarantees to the properties or suitability of this product in a specific application. Prior to its use it is absolutely necessary to test this product in the application to ensure that the product and its use is safe, economical and fully suitable. It should proceed with due diligence.